



Audience Signal Light

ASL4-ND3, ASL4-ND3BT

Digital Signal Light for Auditoriums and Conference Centers



- Four-inch solid LED digits viewable to 200-feet
- Green-yellow-red phase lights activated by pre-set programs
- Beeper
- Wired or wireless connection to Limitimer timer console
- Folding bracket that allows 45° stage floor viewing
- 100mm VESA threaded attachment holes

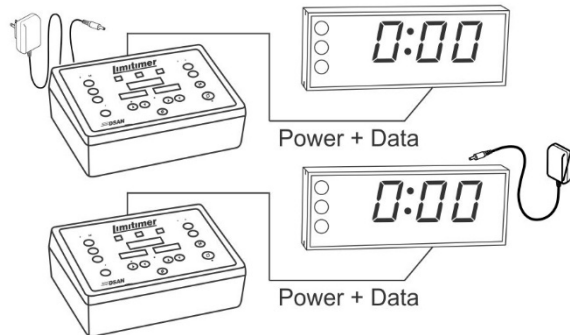
Connections to timer

Wired

Connect to a Limitimer PRO-2000 timer console with ordinary Cat-5 cable to the RJ45 input jack. 12V power flows through the cable so that only the timer or the signal light need be externally powered.

XLR cable may also be used but both timer and signal light should be powered.

For cable runs greater than 1000-feet, always provide local power to the signal light using the included 1-Amp power supply (center pin +).



Wireless

Model ASL4-ND3BT has an integrated Bluetooth receiver module that is enabled when DIP switch #10 (See below) is in the ON position. For wireless operation, use the included external power supply.

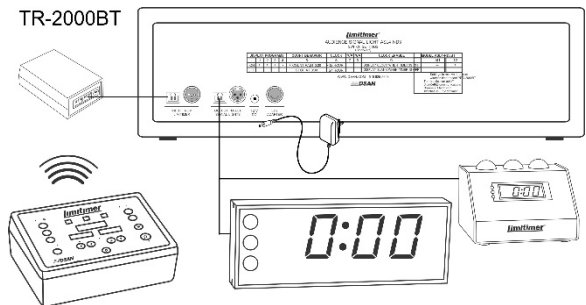
Pair with a Bluetooth enabled Limitimer that is configured with the same RF channel (DIP switches 11 and 12). Up to 7 signal lights can be paired to one timer. Up to 4 signal light—timer networks can operate in proximity on unique RF channels.

Wireless range is about 250-feet.

Note: When pairing, the signal light should be kept within 25-feet of the timer. Once the signal light displays the timer settings, pairing is achieved. Now, the signal light can receive timer data from the full distance range.

Alternate Wireless Connection

Model ASL4-ND3 does not have an integrated Bluetooth receiver. A standalone Bluetooth receiver (DSan model TR-2000BT) may be used to wirelessly capture Limitimer timer data over the same distance, and then connect to one or more signal lights.

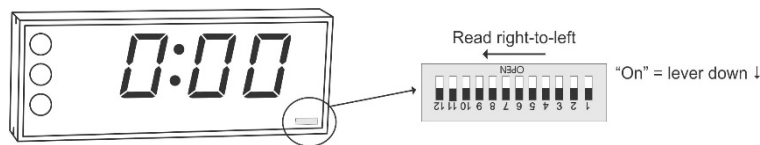


Connections to other signal lights

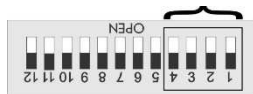
Connect any Limitimer signal light to the output port of the ASL4-ND3. Data and power from a Limitimer connected to the input port will flow to the connected signal light along with power.

Switch Settings

Located on the front lower right



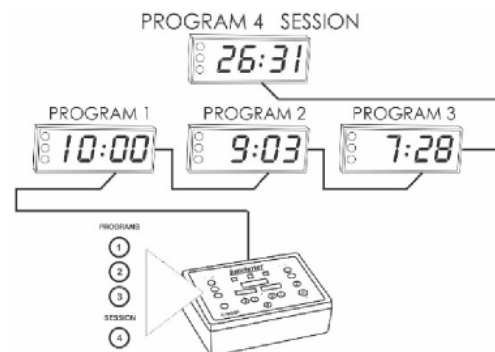
1-4 Display Programs



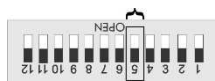
Down to enable

Limitimer PRO-2000 timer provides four individual timing programs. Use switches 1 to 4 to configure the signal light to display any of these programs. If it is configured to display all the programs, it will show the program that is active on the timer.

Program 4 can run in background. It may be used to time an entire session while Programs 1, 2 or 3 may be used for individual presentations. Only one of these programs may be running at one time.



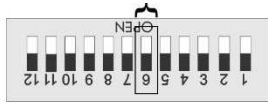
5 Counting



Down to stop at 0:00

When set to ON, the display will stop at **0:00** even though the timer may continue counting overtime. Set to OFF to display overtime.

6 Clock Display Configuration



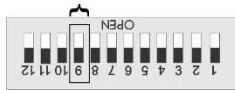
Down to 12-hour clock

When a connected Limitimer timer is turned off, or no timer is connected, ASL4-ND3 can display time-of-day, if enabled. See switch # 9.

Set to ON for 12-hour clock; OFF for 24-hour clock display.

7 -8 Not used

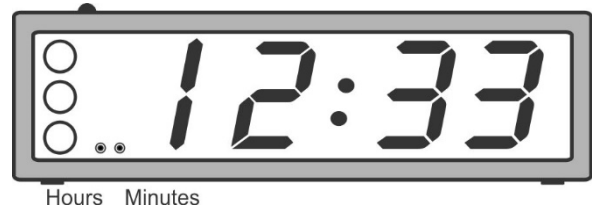
9 Time-of-day Clock



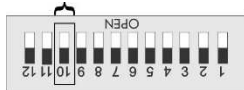
Down to enable time-of-day

Signal Light must be locally powered. It will display the time of day when a connected timer is switched off. If switch 9 is set to OFF (Up), digits will be blank when timer is turned off.

Set time-of day using the two push-button switches on the front lower left. corner



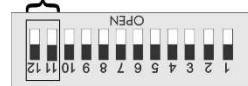
10 Enable Bluetooth Receiver (Model ASL4-ND3BT)



Down to turn Bluetooth off

Set to ON (Down) to receive time data wirelessly from a Bluetooth-enabled timer.

11-12 RF Channel



Match with timer

Match with switches 11 and 12 on a timer. Up to 7 signal lights can be wirelessly connected to a wireless Limitimer. Up to 4 timer-signal light



Power Requirements

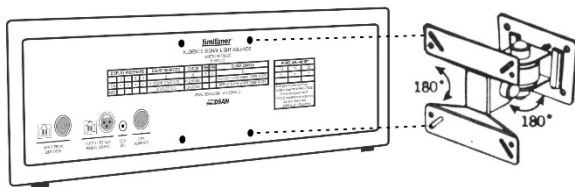
ASL4-ND3 is supplied with a 12V 1Amp external power transformer that accepts 110-240 V mains fitted with the appropriate plug for your country. The signal light draws approximately 500 mAmp. The timer itself draws about 300 mAmp. Therefore, it is possible to operate both the timer and the audience signal light with one power supply – connected to either the timer or the signal light. When the cable connecting the

signal light to the timer is greater than 100-feet, both the signal light and the timer should be locally powered.

Note: Timer-signal light connections can be made with XLR cable. Because this is three-wire cable whereas the Cat-5 cable has four twisted pairs, the effective connection distance is about half. However, as long as both the signal light and timer are locally powered, XLR cable can be used for long runs.

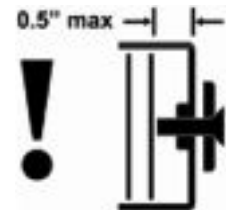
Installations

ASL4-ND3 and ASL4-ND3BT have a stainless-steel bracket that flips open to allow the signal light to stand at 45° on a stage floor.



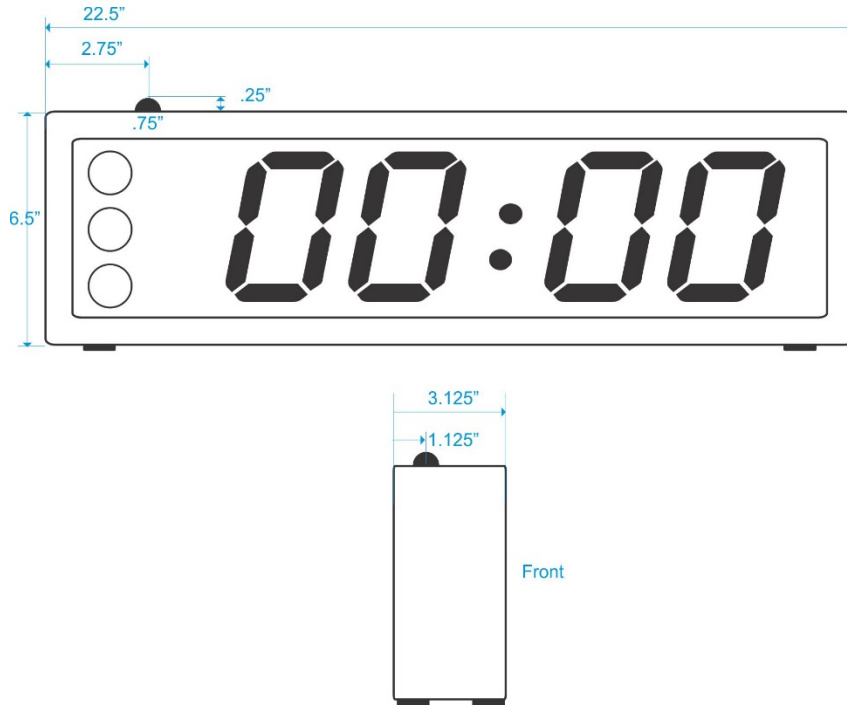
ASL4-ND3 and ASL4-ND3BT have 4 M7-.07 threaded bushings spaced to accept standard 100MM VESA hardware.

Caution when attaching VESA hardware. The total screw length from the outside of the case should be no more than 0.5". Use a washer or shorter screws. Correct size is M4 0.7mm thread. Consult DSAN for alternate attachment screws.



Dimensions

22" (W) x 4.2" (H) x 1.5" (D). See separate dimension drawing.



Warranty

Instruments made by DSAN Corp are warranted against defects in materials and workmanship one year from date of shipment. Any instrument which fails will be restored free of charge.

Service and Support



DSAN Corporation
Roslyn Heights, NY 11577
sales@dsan.com 516 625-5608



Products and accessories available for purchase online:
www.dsan.com/shop



Limitimer user guides, bulletins, Q&As:
www.dsan.com/Limitimer

Made in USA

The logo for DSAN features a stylized graphic on the left consisting of several horizontal black bars of varying lengths, creating a sense of motion or a flag-like pattern. To the right of this graphic, the letters "DSAN" are written in a bold, black, sans-serif font.